



NEWTON | ROWE
SALES & LETTINGS



Wilbury Lodge, Sunningdale

£1,650 PCM



Dry Arch Road, Sunningdale, SL5 0DB

Ground floor two bedroom luxury apartment with private terrace in an exclusive gated development with underground parking for 2 cars.

FEATURES

Gated development
Impressive entrance lobby
Walking distance to Waitrose and train station
Double glazing
Megaflow system
Lift from garage

ACCOMODATION

Sitting/dining room with doors to terrace
Modern fitted kitchen
Master bedroom en-suite
Guest bedroom
Guest bathroom

OUTSIDE

Underground parking for 2 cars and storage room
Surface visitor parking
Private terrace
Communal gardens

FURNISHED/UNFURNISHED

Unfurnished

AVAILABLE

6th October 2023

DEPOSIT PAYABLE

£1,900

COUNCIL TAX

Royal Borough of Windsor & Maidenhead – Band E

EPC RATING

D

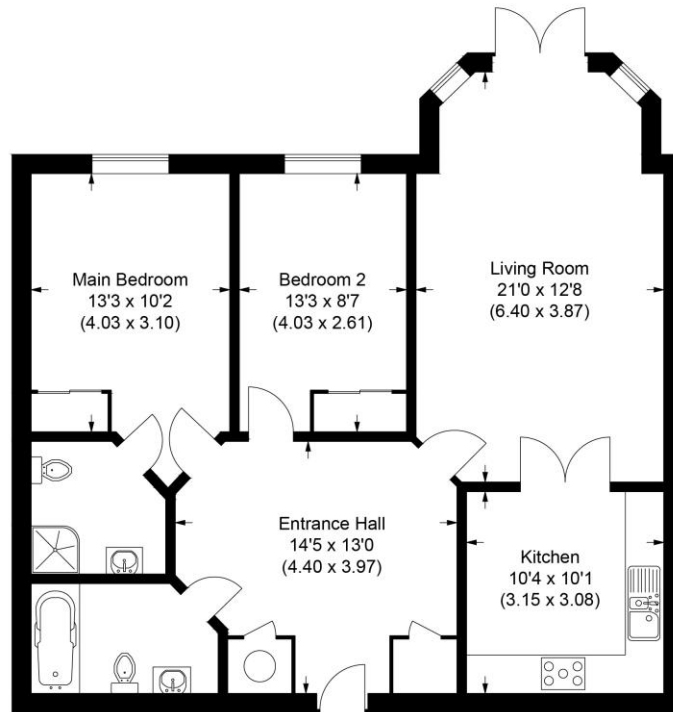
Unfortunately no pets or commercial vehicles







Approximate Gross Internal Area
84 sq m / 907 sq ft



Ground Floor

Illustration for identification purposes only, measurements are approximate, not to scale.

Disclaimer: We wish to inform prospective tenants that we have prepared these sales particulars as a general guide. We have not carried out a detailed survey, nor tested the services, appliances and specific fittings. Room sizes are approximate and rounded: they are taken between internal wall surfaces and therefore include cupboards / shelves, etc. Tenant fees apply, see our notification of tenant costs.

Postcode for sat nav: SL5 0DB



The Old Dairy, 7 Updown Hill, Windlesham, Surrey GU20 6AF
enquiries@newtonrowe.co.uk | 01276 986900